



## Practical Leadership Training with Real-World Impact

### Turnkey. Blended. Built for New Leaders.

Your best individual contributors don't automatically make great leaders, and most leadership training arrives too late or misses the mark entirely. That's a costly gap.

New leaders are juggling shifting priorities, increased responsibilities, and higher expectations, often without the tools or support they need. Meanwhile, HR and L&D teams are being asked to do more with less.

Judge Leadership+ was built to solve that problem where it starts. It's fast to launch, easy to scale, and purpose-built for how today's professionals learn. Through short, focused modules, we help new leaders show up with confidence, clarity, and competence.

#### WHAT YOU GET WITH JUDGE LEADERSHIP+

Judge Leadership+ is delivered in two-week modules that combine:

- Microlearning videos & games
- 3-hour virtual workshops (vILT)
- Guided practice activities
- Post-session tools to reinforce learning



#### WHAT SETS JUDGE APART

Judge Leadership+ was created by veteran learning professionals who understand the pressures new leaders face — and what it takes to help them succeed. Our team combines hands-on experience with instructional expertise to design training that's both effective and easy to implement.

- **Practical, real-world focus:** We focus on actionable skills that new leaders can use immediately.
- **Blended, modern design:** Microlearning, videos, interactive workshops, and practice activities make the learning stick.
- **Flexible format:** Choose the topics and tiers that fit your team's needs, timeline, and budget.
- **Upfront pricing:** What you see is what you get: clean pricing, no hidden costs, and an easy path to launch.
- **Cohort-based learning:** Small groups foster peer connection, engagement, and accountability.
- **Tailored for today's learners:** Built to resonate with how emerging leaders think, learn, and apply new skills on the job.

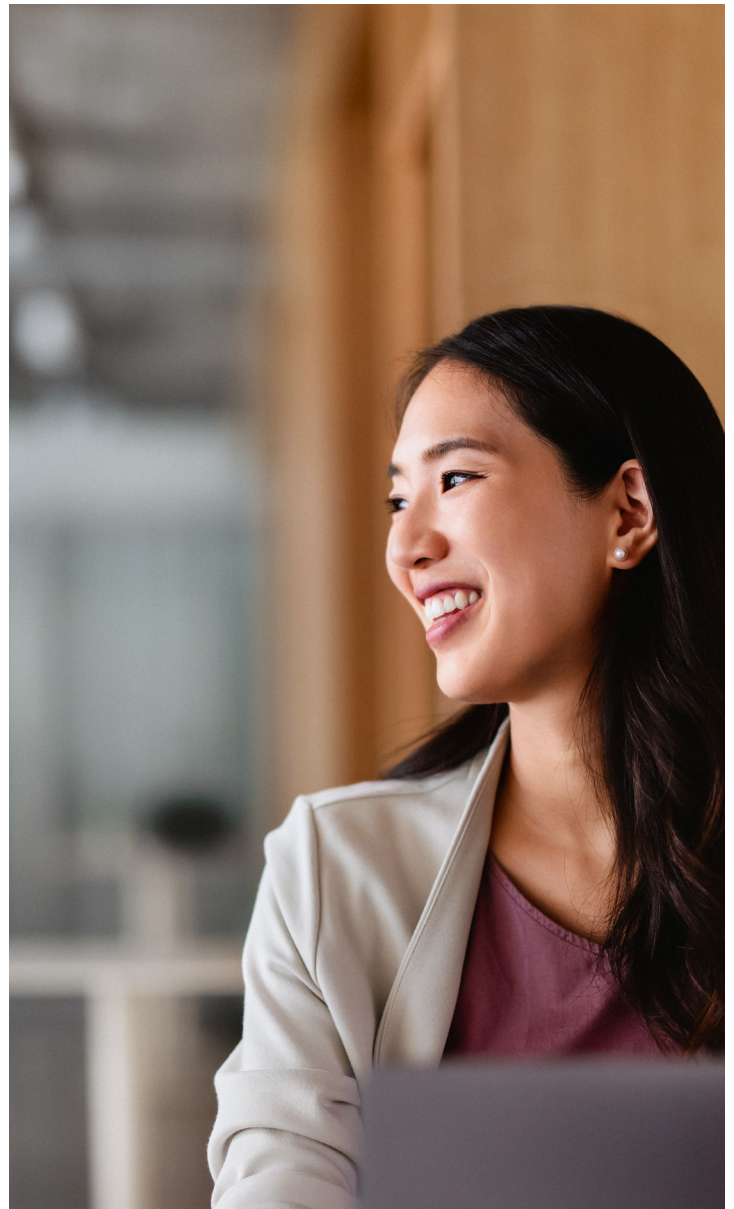
## OPTIONAL ADD-ONS

In addition to the core program, organizations can enhance the experience with in-person facilitated sessions, on-the-job performance assessments, 360-degree feedback tools, custom branding and licensing options, and dedicated L&D coordination support.



### TOPIC HIGHLIGHTS

- Emotional Intelligence
- Impactful Communication
- Leadership Presence
- Navigating Change
- Strategic Problem Solving
- Successful Coaching
- High-Performance Collaboration
- Handling Difficult Conversations



## Get Started with Leadership+

Whether you're rolling out leadership training to a department or enterprise-wide, we make it easy to launch, scale, and measure results.

Visit [Judge.com](https://Judge.com) to learn more about Judge Leadership+.

