



Learning  
Solutions

# Elevate Your Workforce with Judge Custom Solutions

Don't just train. Transform.



**Judge Learning Solutions crafts custom learning experiences that ignite performance, boost productivity, and fuel growth.**

## WHY CHOOSE JUDGE LEARNING SOLUTIONS?

- **Expert-Led:** Our team of seasoned learning strategists, instructional designers, developers and project managers brings decades of experience across industries, configuring customized solutions to suit your needs.
- **Results-Driven:** We focus on measurable outcomes, ensuring your investment in learning delivers true value.
- **Comprehensive:** From strategy to content creation, we provide end-to-end support for your learning initiatives.
- **Innovative:** We leverage cutting-edge learning technologies and methodologies to engage learners and maximize retention.



## UNMATCHED CUSTOM CONTENT DEVELOPMENT

With over 15 years of experience in custom learning creation, our team builds engaging, high-impact assets tailored to your learners' needs across multiple modalities:

- **eLearning courses** with engaging interactive activities, scenarios, and multimedia
- **Instructor-led training workshops** delivered in-person or virtually
- **Motion graphic videos and animations** for compelling concept delivery in under 5 minutes
- **Gamified learning** with immersive storylines, challenges, and scoring
- **Performance support tools** like job aids, checklists, and process guides
- **Integrated training portals** for anytime access to consolidated resources



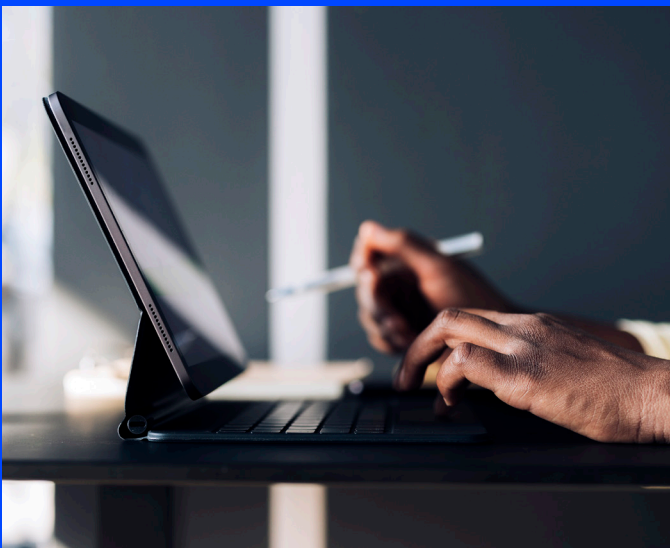
## OUR CUSTOM SOLUTIONS

- **Strategic Learning Roadmaps:** We partner with you to understand your goals, processes, and talent and learning needs. Our learning architects craft dynamic strategies that capitalize on the power of learning to drive your organization forward —accelerating user adoption, fostering vital skills, and preparing your workforce for the future.
- **Needs Analysis & Skill Competency Profiles:** Through proven assessments, we identify competency gaps between your current state and projected needs. We collaborate with team leaders to define critical skills for every role, creating competency blueprints that outline targeted training paths.
- **Tailored Curriculum Mapping:** Using skills competency profiles, we build multimodal learning journeys that deliver the right training at the right time through optimal channels and formats. Your workforce will develop in lockstep with evolving business requirements.
- **Succession & Continuity Planning:** Our competency mapping looks beyond just existing roles to identify the skills needed for future roles. This allows us to implement professional development paths that upskill your current workforce while cultivating your next generation of leaders.
- **Training Optimization:** We'll audit your learning resources — identifying overlaps, gaps, and outdated materials. You'll receive recommendations to streamline your training portfolio for a cost-effective learning content strategy.
- **Onboarding:** We create seamless onboarding experiences that accelerate new employee productivity and satisfaction.



**Don't settle for generic off-the-shelf training.**

Contact Judge Learning Solutions today to discuss your learning needs and how our custom solutions can address them.



**Visit [Judge.com](https://www.judge.com) to learn more about Judge's Custom Learning Solutions.**

